

# The Sugarmaple

Maisons  
**Lapointe**  
Homes

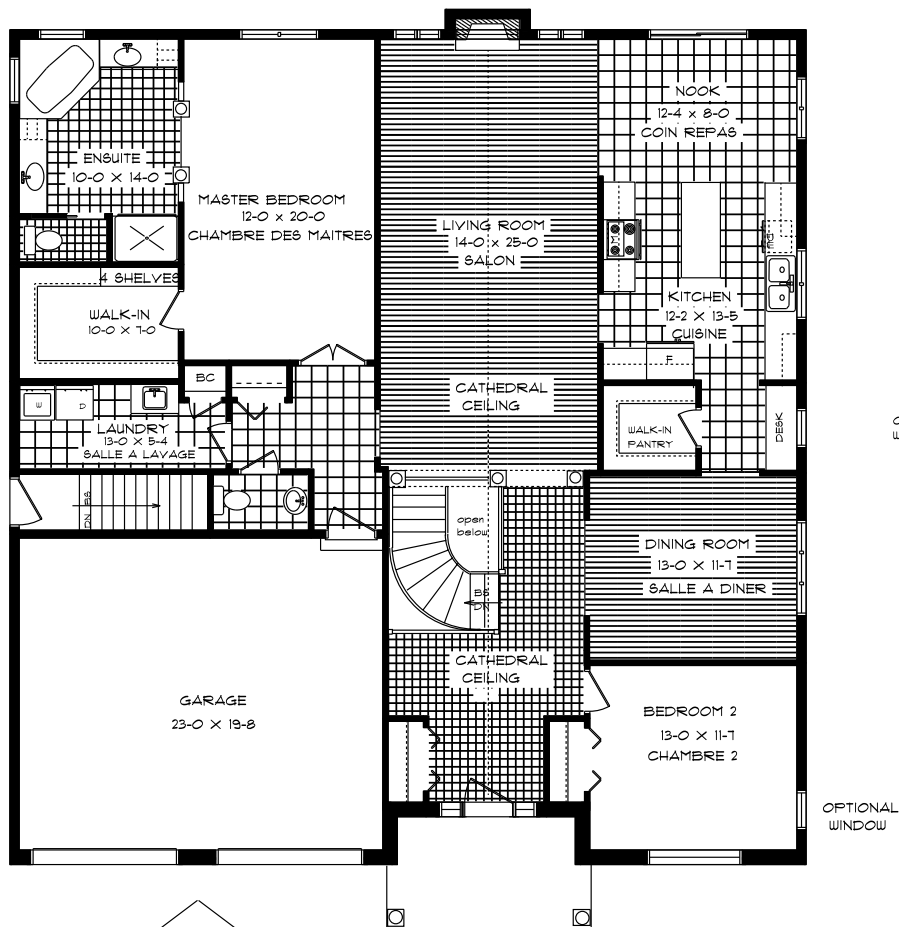


© Lapointe Developments Ltd.

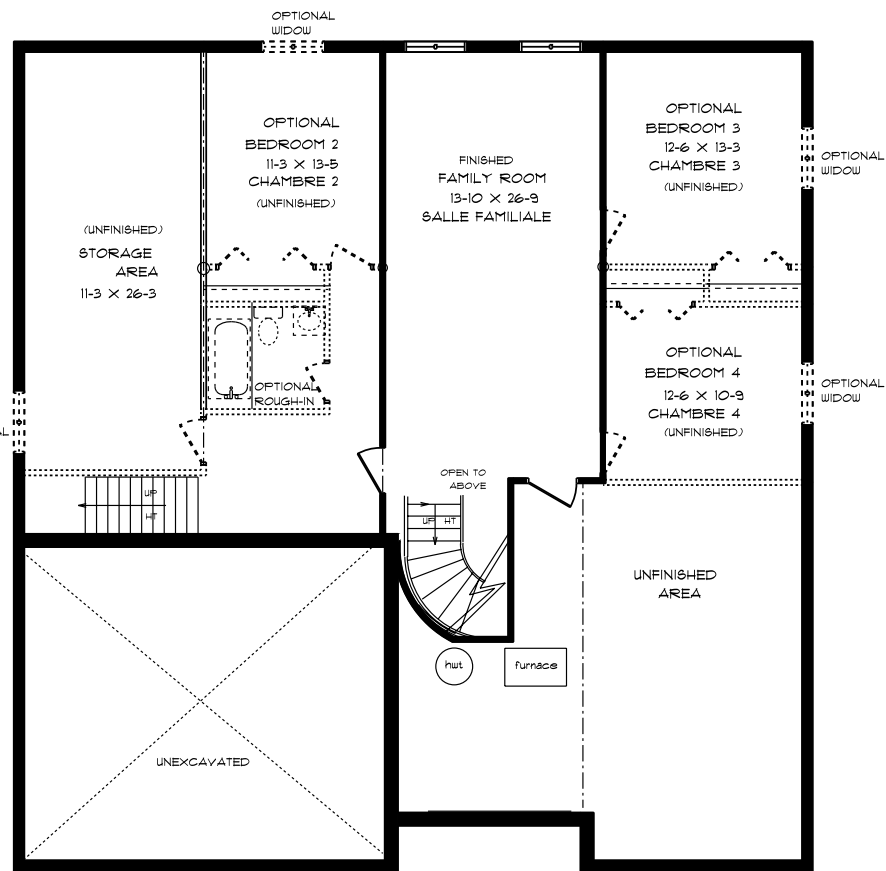
Artist Concept. The renderings & brochures are an artist's concept & some variations may occur to the final finished product and the home may not be built exactly as shown.

General specifications and floor plan supersedes drawings; in particular but not limited to: front door c/w clear glass & california grills, surround masonry around windows are optional, front garage door will be built as per floor plan.

**May 17 2005**



GROUND FLOOR  
PREMIER PLANCHER



BASEMENT PLAN  
SOUS-SOL



# SUGAR MAPLE

TOTAL SQ.FT: 2721 SQ.FT  
INCLUDING 610 SQ.FT FAMILY ROOM (BASEMENT)

Toutes les mesures sont approximatives. Appareils ménagers non inclus. La superficie utilisable du plancher peut varier de la superficie indiquée. Cloisons mécaniques non affichées sur le plan. All measurements are approximate. Appliances not included. Actual usable floor may vary from the stated floor area. Mechanical bulkheads are not shown on plan.